

JR-ENGINEERS

LEPRECHAUN TRAPS

ENGINEERING CHALLENGE

**HAVE YOU EVER WANTED TO CATCH A LEPRECHAUN?
LET'S BUILD A LEPRECHAUN TRAP!**

Get creative with items from around your house. The best part is that every trap can be unique and there is no right way to catch a leprechaun!

Supply suggestions: shoebox, a tissue box, an oatmeal container, pipe cleaners, beads, sticks, cupcake liners, fake gold coins, twine, ribbon, popsicle sticks, zip ties, washers and nuts, measuring tape, glitter, stickers.

Time Constraint: 30 minutes (or more if time allows)

Extend the challenge: Use a timer and see who can make a a working trap first.

Some fun additions to add to your leprechaun trap: A tasty leprechaun bait, a special note left by the leprechaun.

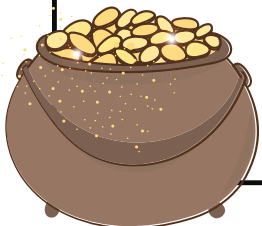
This fun STEM activity includes coming up with a design and planning it out, building creations, using math skills, testing ideas, problem-solving weak points, and inventing trapping mechanisms (simple machines)!



PLAN YOUR LEPRECHAUN TRAP



SUPPLY LIST



DESIGN ELEMENTS

- bait
- gold
- ladder
- pot
- rainbow
- shamrocks